

Årsrapportering 2021

Med trender och jämförelser 2009 - 2021

SBR - Hallandsdistriktet



Grunddata Halland

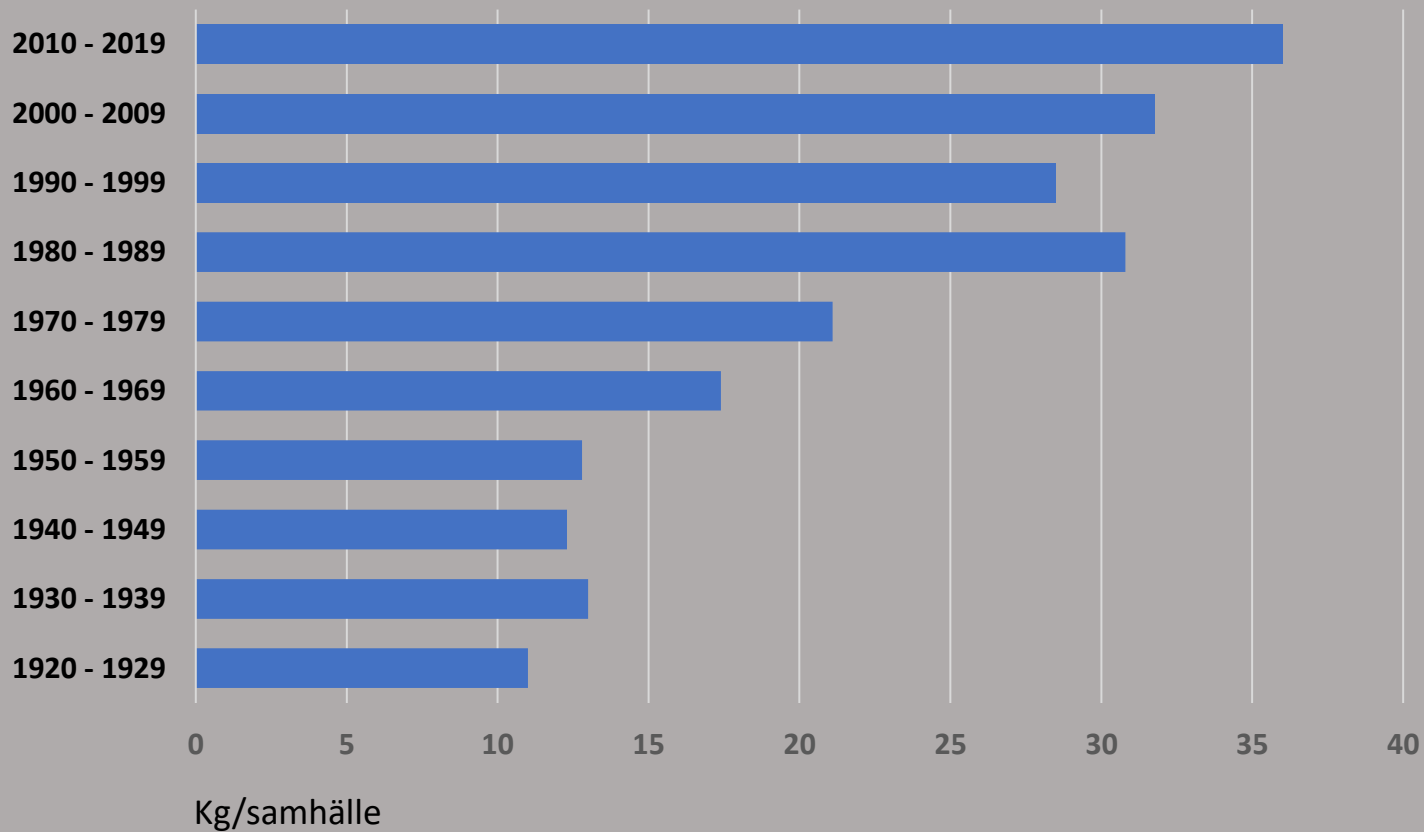
2009 - 2021

Invintrade samh.		Vinterförlust		Produktiva samh. */		Skörd totalt		Medelskörd
År	Antal	Antal	%	År	Antal	År	Kg	Kg/Samhälle
2008	1 409	183	13	2009	1 226	2009	54 901	45
2009	1 253	236	19	2010	1 017	2010	53 489	53
2010	1 386	192	14	2011	1 194	2011	46 060	39
2011	1 701	178	11	2012	1 523	2012	51 945	34
2012	1 633	367	23	2013	1 266	2013	46 999	37
2013	1 397	155	11	2014	1 242	2014	56 600	46
2014	2 034	267	13	2015	1 767	2015	42 465	24
2015	2 298	339	15	2016	1 959	2016	59 426	30
2016	2 278	391	17	2017	1 887	2017	45 419	24
2017	1 761	247	14	2018	1 514	2018	56 288	37
2018	2393	337	14	2019	2056	2019	52 645	26
2019	1957	193	9	2020	1764	2020	53 491	30
2020	2190	296	14	2021	1894	2021	64791	34
							Perioden	35

*/ Antalet invintrade samhällen minus Vinterförluster

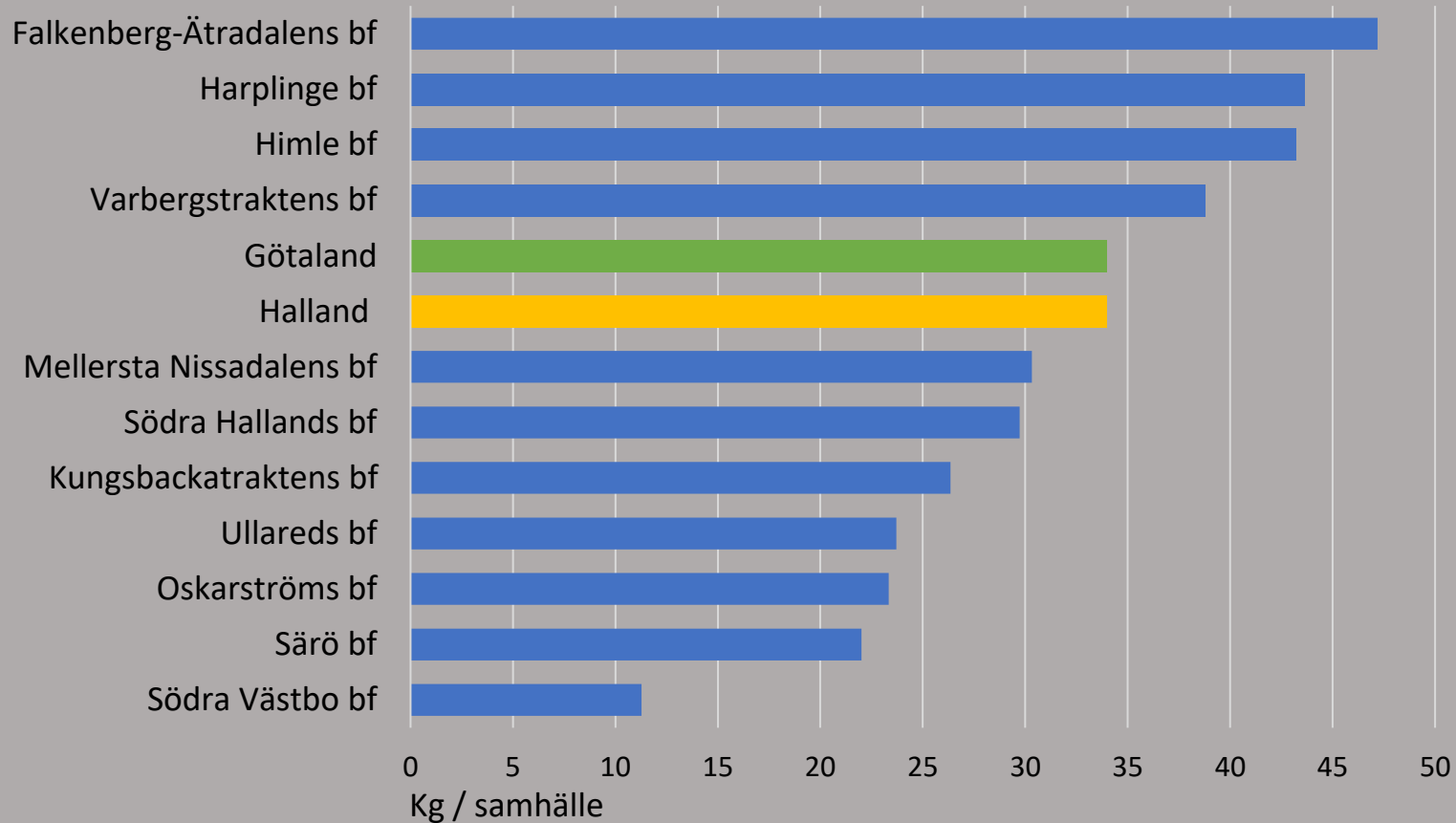
Medelskördar

Riket 1920 - 2019



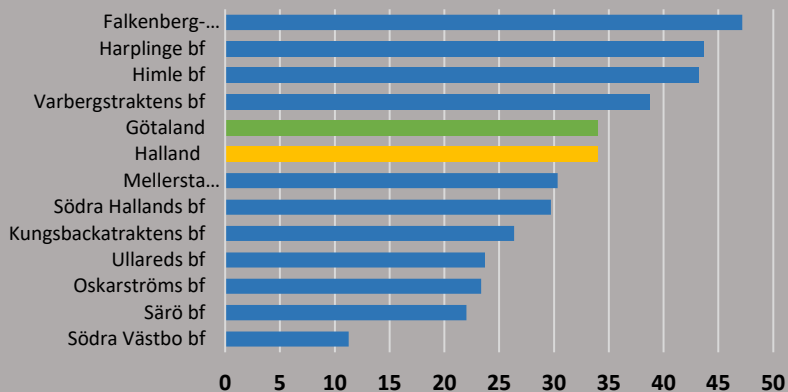
Medelskördar

Halland 2021

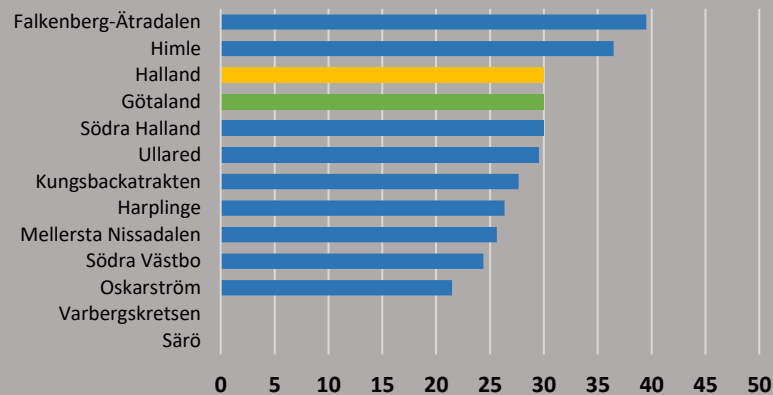


Medelskördar Halland

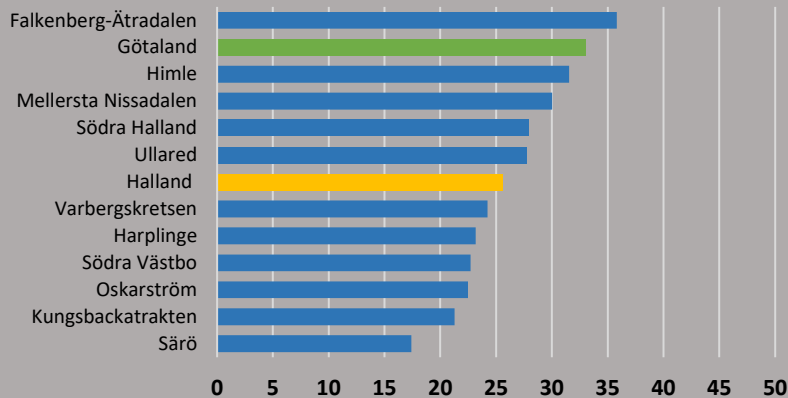
2021



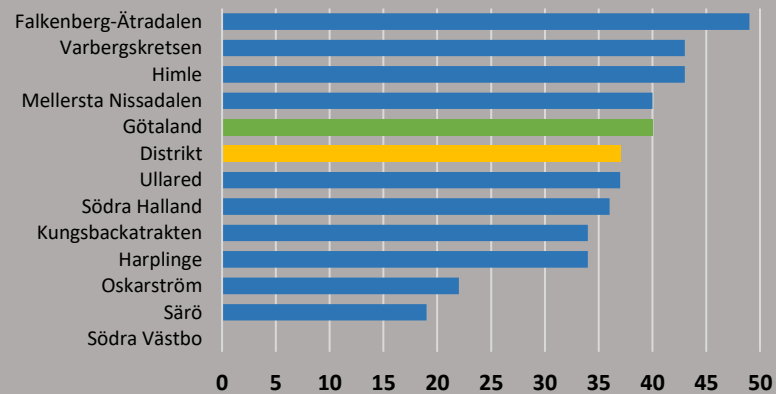
2020



2019



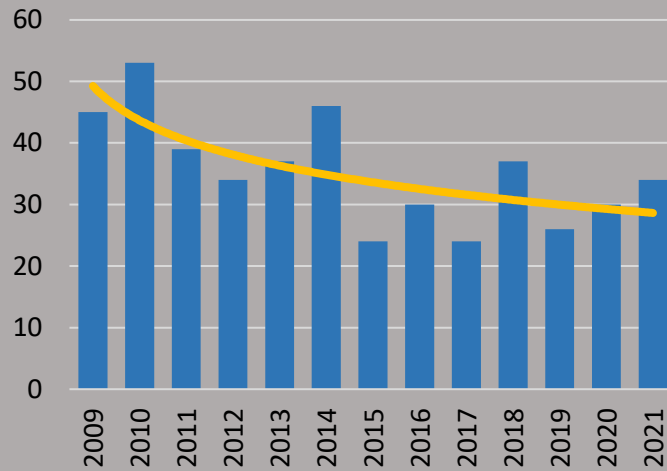
2018



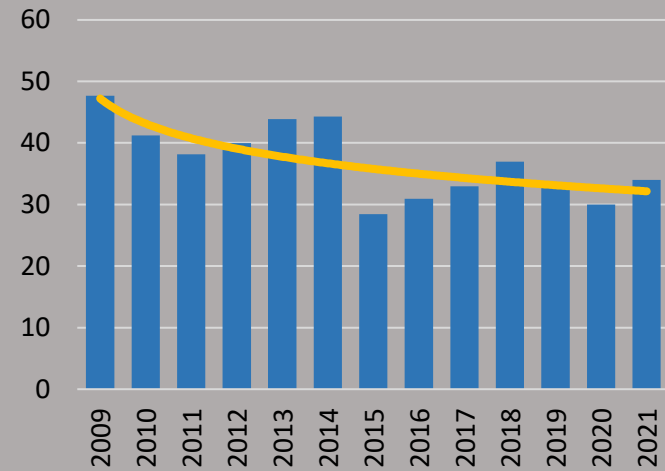
Medelskördar

Trend 2009 – 2021

Halland

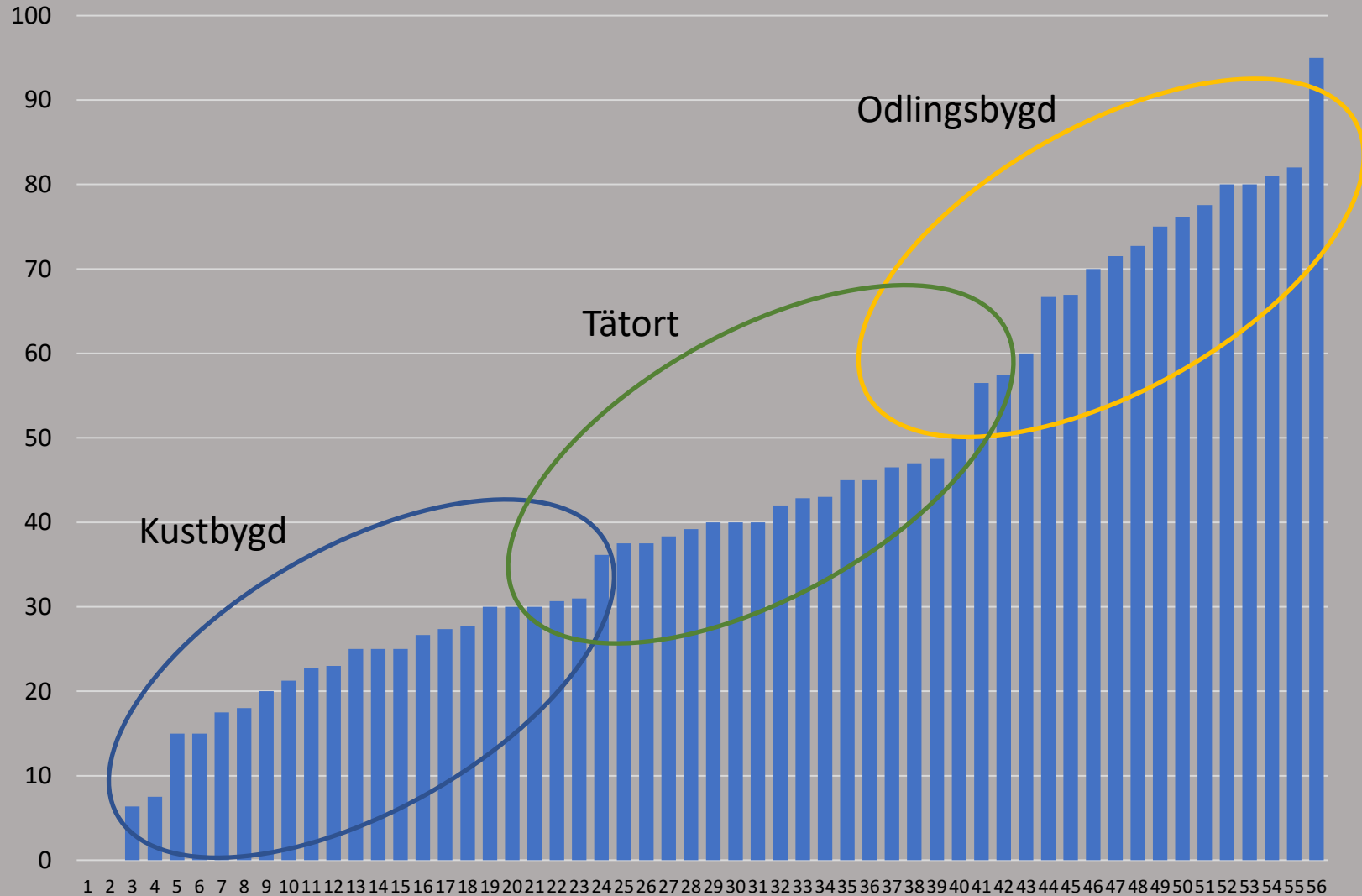


Göteborg



Medelskörd 2021

Medlemsbigårdar i Falkenberg – Ätradalen





Slut